



Cat.5e UTP Patch Cord

Part Number:

D1-5EUPC-LLCC (with boot cover type)
D1-5EUPC-LLCC (molding type)

/X (Suffix with part number means cross wiring)
> LSZH
(Suffix with part number means LSZH jacket)
/X-LSZH
(Suffix with part number means cross wiring & LSZH jacket)

LL : Length , CC : Color Code

BK ~ Black, GR ~ Grey, BL ~ Blue, GN ~ Green,
RD ~ Red, WH ~ White, YW ~ Yellow, OR ~ Orange

Product Description

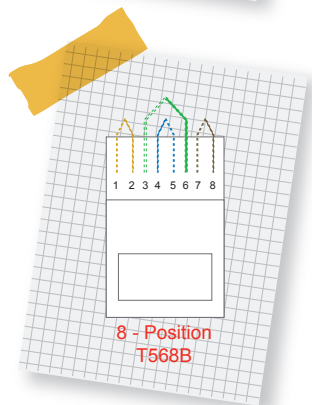
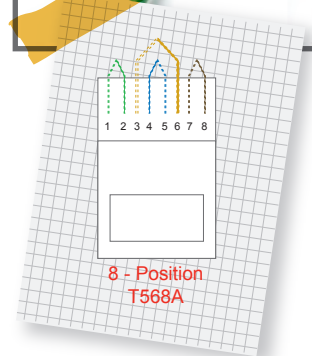
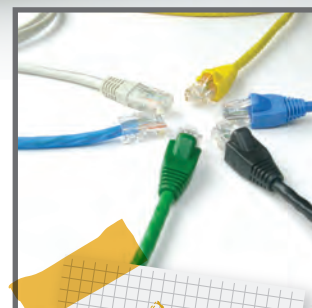
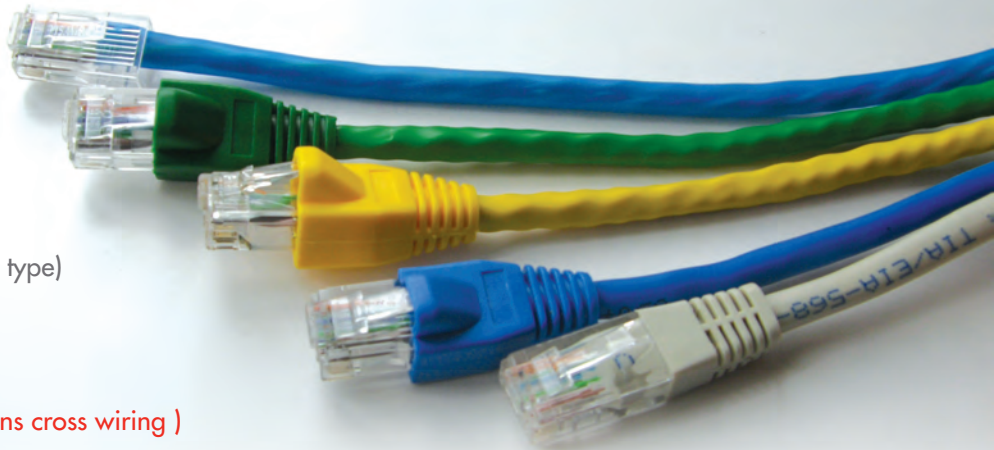
- : With most flexible Cat.5e UTP patch cable
- : Terminated with RJ45 un-shield plug
- : Mold & boot type for plug snag free & strain relief
- : Two special color : Transparent blue (CB) & transparent green (CG) can match Apple Machintosh
- : Individually bagged
- : T568A or T568B wiring
- : Cross wiring for jumper between Hub/Switch
- : Cat.5e compliant, component level. ETL verified
- : Low smoke zero halogen (LSZH) optional

Application

100Base-TX (Fast Ethernet)
1000Base-T (Gigabit Ethernet)

Qualifications & Approvals

ANSI/TIA/EIA-568-B.2 Cat.5e



Transmission Properties

Frequency (MHz)	Next dB/2m (min.)	Next dB/5m (min.)	Next dB/10m (min.)	Return Loss dB (min.)
1	65.0	65.0	65.0	19.8
4	62.3	61.5	60.4	21.6
8	56.4	55.6	54.7	22.5
10	54.5	53.7	52.8	22.8
16	50.4	49.8	48.9	23.4
20	48.6	47.9	47.1	23.7
25	46.7	46.0	45.3	24.0
31.25	44.8	44.2	43.6	23.0
62.5	39.0	38.5	38.1	20.0
100	35.1	34.8	34.6	18.0